



iScan

PERFECT IMAGING DIAGNOSIS

PORTABLE ULTRASOUND SCANNERS FOR FIELD WORK



DRAMINSKI iScan

Ideal for field work

Accuracy and reliability in diagnosis of cows and mares

- perfect image
- Cine loop recordings
- very light and portable
- resistant to dust and water
- instant ready to work

Standard equipment

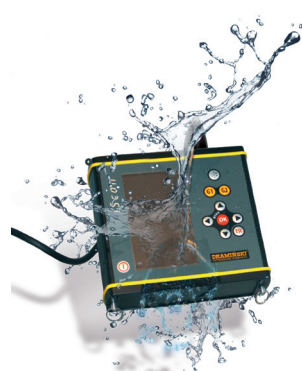
- scanner with integrated linear rectal probe
- 1 external battery
- charger
- USB cable
- carrying straps
- transport case
- PC transmission programme
- operation manual

Optional equipment

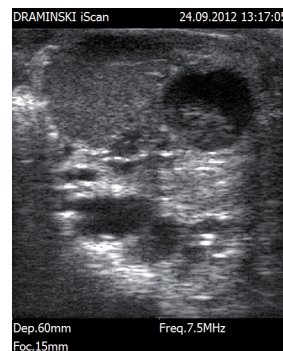
- gel for ultrasound scanning (250 ml)
- shade cover for screen
- gel stand off for probe
- additional battery

TECHNICAL SPECIFICATION

Weight	scanner – 1720 g battery – 280 g
Dimensions	17 cm x 17 cm x 6 cm
Electronic probe: linear	7.5 MHz (frequency range 4-9 MHz)
Scanning range	from 0 to 12 cm (for linear probe, rectal use)
Screen	LCD, LED screen, 5.0" diagonal
Display modes	B, B+B, B+M
Power supply	Li-ion battery pack,
working time	5 hours
charging time	2 hours 30 minutes
Memory	200 pictures, 50 cine loop sequences
Cine-Loop	up to 256 frames (20 sec.)
PC transmission	via USB
Additional options in the menu:	image freeze measuring zoom 120, 140, 160 % gain, gamma



Scanner washing



Cow – ovary



Heifer – 28th day of pregnancy





DRAMIŃSKI ANIMAL *profi*



PROFESSIONAL VETERINARY ULTRASOUND SCANNER FOR PRECISE EXAMINATION OF SMALL AND LARGE ANIMALS

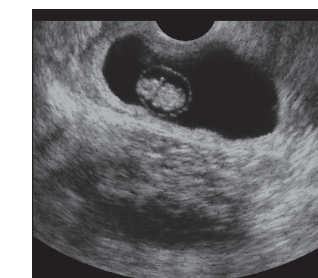
- professional – high quality of image
- universal for examinations of small and large animals
- robust – strong aluminium housing
- functional:
 - display modes: B, B+B
 - memory space for 200 images
 - Cine-loop
 - double zoom

Standard equipment includes:

- sector mechanical probe (abdominal or rectal)
- 2 external batteries
- charger
- set of cables
- carrying straps
- gel for ultrasound scanning (250ml)
- transport case
- PC transmission software
- operation manual

TECHNICAL SPECIFICATION

Weight	scanner – 1557 g, battery – 655 g, probe – 265 g
Dimensions	22 cm x 16.5 cm x 5.5 cm
Sector mechanical probe	5.0 MHz (frequency range 3.5-7 MHz) (rectal or abdominal)
penetration depth	abdominal probe: to 7, 10, 12, 15, 20 cm rectal probe: to 7, 10, 12 cm
scanning angle	90° (abdominal probe), 180° (rectal probe)
Display	TFT LCD, 6.4"
Display modes	B, B+B
Power supply	external battery
working time	4 hours
charging time	1 hour 45 minutes
Memory	200 pictures
Cine-Loop	up to 119 frames (15 sec.)
PC transmission	via USB
Additional options in the menu	image freezing, measuring, 2x zoom, gain control



Cow – embryo, 37th day of pregnancy



Cow – twin pregnancy



DRAMIŃSKI SonoFarm *profi*



UNIVERSAL VETERINARY ULTRASOUND SCANNER FOR PREGNANCY DETECTION IN SMALL AND LARGE ANIMALS

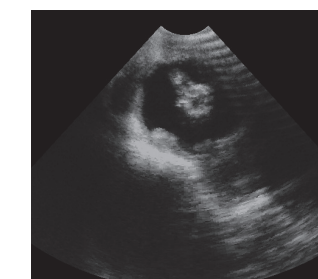
- easy to use
- universal for examinations of small and large animals
- robust – strong aluminium housing
- battery supply

Standard equipment includes:

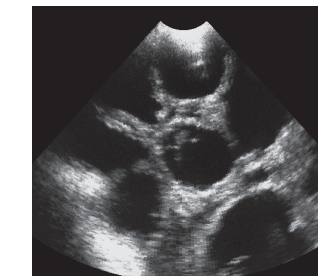
- sector mechanical probe (abdominal or rectal)
- 1 external battery
- charger
- set of cables
- carrying straps
- gel for ultrasound scanning (250ml)
- transport case
- operation manual

TECHNICAL SPECIFICATION

Weight	scanner – 1557 g, battery – 655 g, probe – 265 g
Dimensions	22 cm x 16.5 cm x 5.5 cm
Sector mechanical probe	5.0 MHz (frequency range 3.5-7 MHz) (rectal or abdominal)
penetration depth	abdominal probe: to 7, 10, 12, 15, 20 cm rectal probe: to 7, 10, 12 cm
scanning angle	90° (abdominal probe), 180° (rectal probe)
Display	TFT LCD, 6.4"
Display modes	B
Power supply	external battery
working time	4 hours
charging time	1 hour 45 minutes
Cine-Loop	up to 119 frames (15 sec.)
Additional options in the menu	image freezing, measuring, gain control



Sheep – 30th day of pregnancy



Sow – 28th day of pregnancy



DRAMIŃSKI SonoFarm *mini*



FAST AND EASY PREGNANCY DETECTION IN SMALL ANIMALS

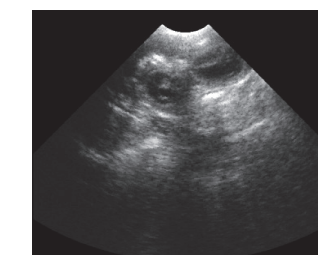
- light and handy
- easy to use
- strong, aluminium housing

Standard equipment includes:

- scanner with sector mechanical probe (abdominal or rectal)
- 1 external battery
- charger
- set of cables
- carrying straps
- gel for ultrasound scanning (250 ml)
- transport case
- operation manual

TECHNICAL SPECIFICATION

Weight	scanner – 1557 g, battery – 655 g, probe – 265 g
Dimensions	22 cm x 16.5 cm x 5.5 cm
Sector mechanical probe	5.0 MHz (frequency range 3.5-7 MHz) (rectal or abdominal)
penetration depth	abdominal probe: to 7, 10, 12, 15, 20 cm rectal probe: to 7, 10, 12 cm
scanning angle	90° (abdominal probe) 180° (rectal probe)
Display	TFT LCD, 6.4"
Display modes	B
Power supply	external battery
working time	4 hours
charging time	1 hour 45 minutes
Additional options in the menu	image freezing, gain control



Bitch – 25th day of pregnancy



Goat – 40th day of pregnancy