

## DRAMIŃSKI SonoFarm mini

High-tech on your farm

### Simple and fast pregnancy detection in all animals

- light and handy
- easy to use
- strong, aluminium housing

### Standard equipment:

- scanner with sector mechanical probe (abdominal or rectal)
- 1 external battery
- charger
- set of cables
- carrying straps
- gel for ultrasound scanning (250 ml)
- transport case
- operation manual

Small equipment, great opportunities!

**100% effectiveness –  
– confirmed by breeders**

### Technical data:

Weight	scanner – 1557 g, battery – 655 g, probe – 265 g
Dimensions	22 cm x 16.5 cm x 5.5 cm
Sector mechanical probe	5.0 MHz (frequency range 3.5–7 MHz) (rectal or abdominal)
penetration depth	abdominal probe: to 7, 10, 12, 15, 20 cm rectal probe: to 7, 10, 12 cm
scanning angle	90° (abdominal probe) 180° (rectal probe)
Display	TFT LCD, 6.4"
Display modes	B
Power supply	external battery
working time	4 hours
charging time	1 hour 45 minutes
Additional options in the menu	image freezing, gain control



*... for the best  
livestock breeders*

**DESIGNED TO WORK ON A FARM**







## The DRAMIŃSKI Estrous Detector

It detects the best moment for mating or insemination

### Breeders benefits:

- Saving on time needed for visual animals observation
- Saving on valuable sperm by mating or inseminating in optimal time
- Saving on fodder and abbreviation of period between next pregnancies through elimination silent heat
- Confirming early pregnancy, facilitating proper treatment of the pregnant animal

The right mating or insemination moment is the key to success in breeding and farming

**The estrous detector helps breeders to determine the exact moment of the estrous cycle when the ovulation takes place (also in the case of silent heat).**

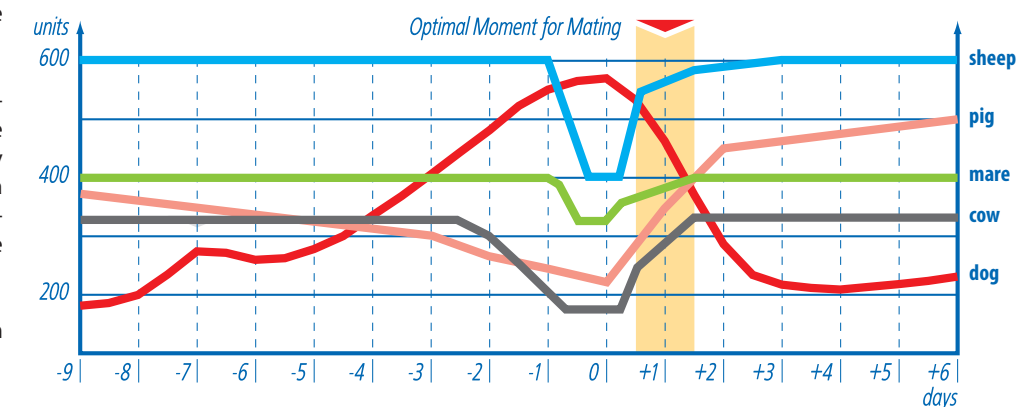
The vaginal mucus changes according to the period of the estrous cycle. It has a strong influence on its electrical resistance property. The estrous detector monitors changes in electrical resistance of the vaginal mucus enables to establish that symptoms, which indicate the approaching ovulation.

Besides the estrous detector define the best moment for mating it can also confirm early pregnancy. When female is not pregnant the estrous detector allows to discover next in these days taking a stand estrous.

Measurements are taken simply by properly inserting the probe in the vagina and taking the reading. To detect estrous or early pregnancy measurements should be taken once or twice a day for few days. The early pregnancy is confirmed by lack of electrical resistance change typical of estrous.

### The estrous detector is available in version for:

- Cows and mares
- Sows
- Sheep and goats
- Dogs



Examples of typical changes in electrical resistance of vaginal mucus registered by the DRAMIŃSKI estrous detector



## The DRAMIŃSKI Pregnancy Detector

### Effective and early diagnosis of pregnancy

- Diagnosed, early pregnancy allows for rapid separation of fertile and barren female
- Quickly organize the groups of animals irretrievably reduces financial loss
- Early diagnosis with the highest efficiency, helps you make the right decisions about reproduction arrangement

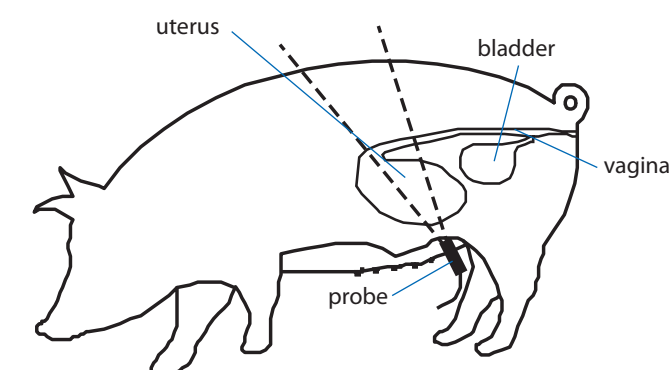
The ultrasound test is used to confirm pregnancy by detecting the amniotic fluid in the uterus. It uses the principle of waves reflection. The probe, applied to the female body sends ultrasound beams, which bounce off the uterus filled with amniotic fluid, back to the probe causing a signal change generated by the appliance. Optimal day of the test depends on animal species and it is counted from the date of mating or insemination. If the test was in very early pregnancy should be necessarily repeated in the optimal time.

### The steps taken during examination:

- The probe face and animal skin moisturize by oil
- Apply the probe to the female body in a definite place (3 cm above the nipple line and 5 cm from the back leg), direct the beam to the head at an angle of 45°
- Proper contact with the animal body is indicated by pulsing sound and green LED
- Slowly move the probe to let the ultrasound beams hit the uterus filled with amniotic fluid, the change of tone and light to intense pulsed means the confirmation of pregnancy
- The best time for testing is in the morning, when the animals are fasted, thereby eliminating the adverse factors affecting the accuracy of the test (for ex. the full bladder)

### The ultrasound pregnant test is available in version for:

- Sows
- Sheep and goats
- Dogs



animal species	The days of examination from-to	The optimal day of examination
pig	18 – 75	25 – 30
sheep	50 – 100	70
goat	40 – 100	60 – 70
dog	21 – 40	25 – 28



## The DRAMIŃSKI Mastitis Detector

### The diagnosis at the earliest stage of the disease – the way to produce high quality milk

- Forestripping and monitoring the udder condition at once
- The assessment of the udder quarters condition based on the electrical resistance of milk
- The durable and waterproof case allows you to work in the toughest conditions

### One of the biggest problem, which often occurs in milk cows breeding is the udder inflammation – MASTITIS.

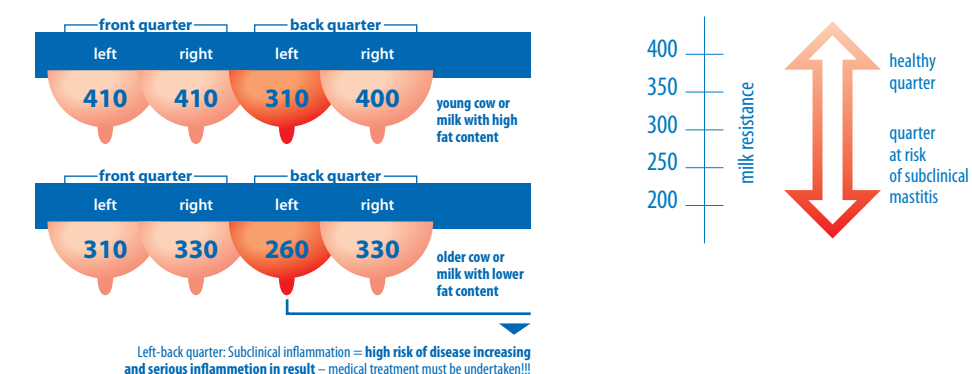
The state of subclinical inflammation called *Mastitis subclinica* is very costly. However, milk in this state does not show changes in taste and appearance and the udder has no visible lesions. Milk from diseased quarters, has poor quality and the productivity of this quarter is limited.

It was found that the evolution of subclinical state accompanied by a number of changes normally unobtrusive. It is important that the **increase of salt in milk**, having a decisive impact on reducing the electrical resistance of milk.

The relationship between the resistance of milk and the udder health condition, described above, have been used in **The DRAMIŃSKI Mastitis detector**.

**Systematic pre-milking and udder monitoring is an essential element of mastitis prevention**

### Exmple:



**Mastitis starts earlier than you think**