



RES Equipment Sales

339 Kennedy Road, Dryden, Ontario P8N 2Y8
Phone: 1 (807) 221-4670 ~ Fax: 1 (807) 221-4672
Website: www.resequip.com



Our facilities include custom repair and fabricating shops, warehouses and offices. RES services include full remanufacturing or refurbishing of used mining equipment and sales of new mining equipment. We provide...



Custom design, modifications, and fabrication services
Hydraulic component overhauls
Power train and engine rebuilds
Re-manufacturing or rebuilding most mine and mill process related equipment
Parts and supplies for mine maintenance or operations
Rebuilding customer-owned equipment



RES is an A.C.E. distributor of well-known Eaton Aeroquip hydraulic hose, fittings, and adapters. We offer in-house custom manufactured hose assemblies, commercial bulk hose and fittings. Any size hose or fitting can be replicated, if not in stock, we will gladly order in for you.



Oils and specialty fluid products. Hydraulic oils, grease, heavy duty diesel engine oils, anti-freeze, washer fluid, chainsaw bar oil, gear oil and pneumatic rock drill (RD) oil.



TS METALS

Quality metal roof sheeting and wall sheeting systems. We have all the fasteners, trim, corners, flashing, fascia; everything you need to replace your worn-out commercial, industrial or residential roof or wall system. We offer on-site estimates, order and deliver your material, and arrange the installation if you need us to.





RES

Equipment Sales

Box 220, 339 Kennedy Road
Dryden, Ontario, Canada P8N 2Y8



Phone number: 1 807-221-4670 ~ FAX number: 1 807-221-4672
Email: pneel_res@shaw.ca Website: <http://www.resequip.com>

RES Capabilities

RES is a supplier of quality products and services to all sectors of the resource industry. Our clients include mining, forestry, construction, transportation, municipalities and the public. Call, email, or fax us when you are looking for any of the products or services listed below.

PRODUCTS and SERVICES

RES Equipment Sales

RES Equipment Sales in Dryden (Head Office) and Sudbury, Ontario, Canada, can supply most types of underground mining equipment, including LHD, Drilling and Loading, Service Vehicles, rail-bound and trackless equipment, pneumatic and electric. Our shops provide custom design and fabrication, hydraulic component overhauls and power train rebuilds. We are able to manufacture or re-furbish most mine related equipment. We offer parts and supplies for mine equipment maintenance and operations.

RES Structure Steel & Supplies

We are a distributor of structural steel, including angle, channel, "I" and "H" beam, plate, flat bar, speciality alloys, such as, T1, stainless steel, and aluminium.

RES Welding & Fabrication

If you need fast, professional repair work, our fully equipped WELDING, MACHINE & FABRICATION SHOP is available to serve you. Our machine shop is available to repair or re-work most metal parts and components. We also offer on-site repairs (standard rates apply).

RES Rental & Contracting

We rent skid steer loaders, dozers and excavators (with or without operator). Also, attachments, such as, posthole auger, trencher, power sweeper, dozer blade, forks, grapple bucket, chipper, etc. We also contract and supply materials for landscaping, excavating, construction. and demolition work. Call us for estimates.



RES

Equipment Sales

Box 220, 339 Kennedy Road
Dryden, Ontario, Canada P8N 2Y8



Phone number: 1 807-221-4670 ~ FAX number: 1 807-221-4672
Email: pneel_res@shaw.ca Website: <http://www.resequip.com>

RES Products

Aeroquip

RES is an A.C.E. distributor of well-known Eaton Aeroquip hydraulic hose, fittings, and adapters. We offer in-house custom manufactured hose assemblies, commercial bulk hose and fittings. Any size hose or fitting can be replicated, if not in stock, we will gladly order in for you.

Canun International

Canun International, designs and manufactures pneumatic rock drills for the mining, quarrying (granite), and construction industries. Products include Canun Jackleg Drills, Stoper Drills, Sinkers, Quarry Drills, "Canpush" Screen Pushers, and Canun Service Parts. Canun products are manufactured in Canada on modern CNC equipment.

Nemco

Oils and specialty fluid products. Hydraulic oils, grease, heavy duty diesel engine oils, anti-freeze, washer fluid, chainsaw bar oil, gear oil and pneumatic rock drill (RD) oil.

Oldenburg Cannon

RES is a Canadian distributor for Oldenburg Cannon underground mine equipment. Oldenburg Cannon is a worldwide manufacturer of drill jumbos, scalers, and specialized underground mining equipment, including vehicles suitable for personnel carriers - service and utility. Oldenburg Cannon is the manufacturer of the innovative CH series of Hydraulic Rock Drills, successfully drilling in Canadian hard rock mines. Oldenburg Cannon is a US manufacturer. Contact us for details.

Drill Jumbo (1, 2, or 3 Boom)



Rock Bolter (Remote or Manual)



UTILITY TRUCKS

(Lube, Scissors, Boom, Flat-Deck, Anfo, Mech/ ELECT Service)



RES

Equipment Sales

Box 220, 339 Kennedy Road
Dryden, Ontario, Canada P8N 2Y8



Phone number: 1 807-221-4670

Email: pneel_res@shaw.ca

~ FAX number: 1 807-221-4672

Website: <http://www.resequip.com>



Vulcan attachment
(Breakers, Clams, Pulverizers,
Crushers, Compactors, Grapples, Rippers)

NPK
Pedestal Rockbreakers
(Surface or Underground)



CANUN ROCKDRILLS

(Stoper, Jackleg, Sinkers, Screen Pushers and Parts)



RES

Equipment Sales

Box 220, 339 Kennedy Road
Dryden, Ontario, Canada P8N 2Y8

Phone number: 1 807-221-4670

Email: pneel_res@shaw.ca

~ FAX number: 1 807-221-4672

Website: <http://www.resequip.com>

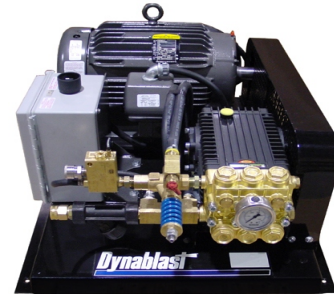


**RES - We are a distributor for Kodiak and Dynablast
with parts and accessories**

Dynablast Inc



CARRY & CART WATER UNITS



KF SERIES TRIPLEX PLUNGER PUMP



SWEEPERS



VACUUMS



GENERATOR



PRESSURE WASHERS

RES

Equipment Sales

Box 220, 339 Kennedy Road
Dryden, Ontario, Canada P8N 2Y8

Phone number: 1 807-221-4670

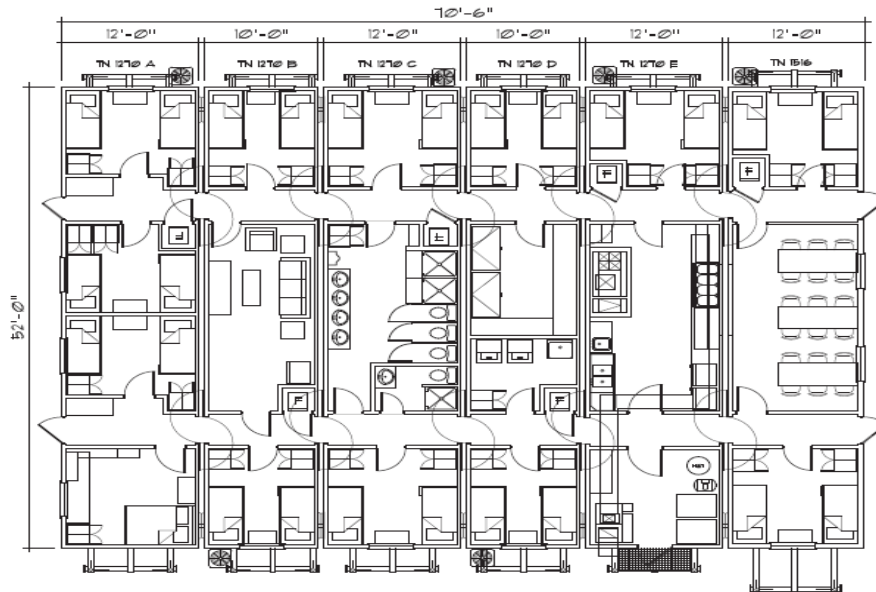
~ FAX number: 1 807-221-4672

Email: pneel_res@shaw.ca

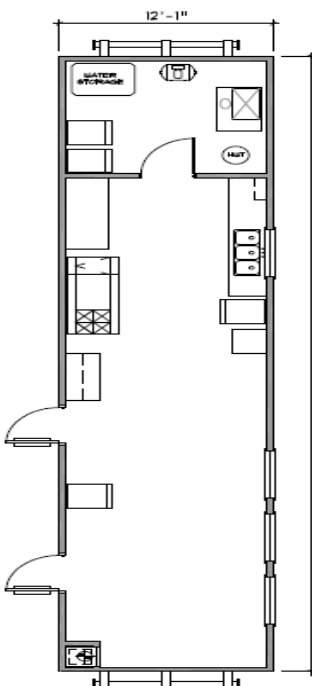
Website: <http://www.resequip.com>

**RES can supply your job site with Man Sleepers, Staff Quarters, Kitchen & Mine Dries.
You can rent or purchase units TO FIT YOUR NEEDS .**

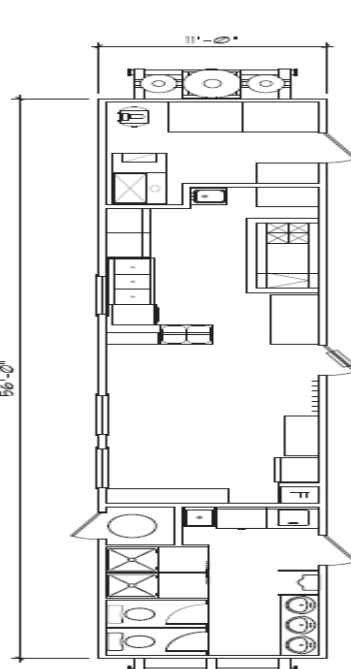
CAMP UNITS



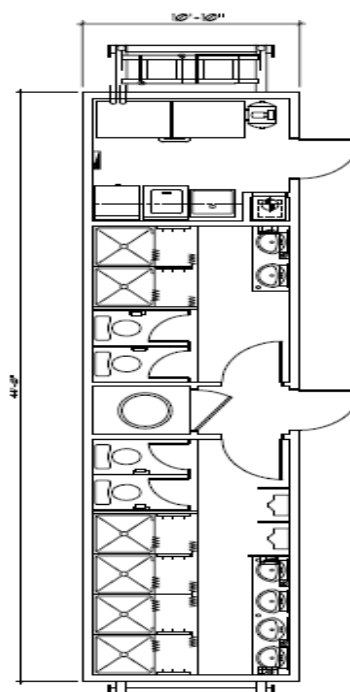
KITCHEN / DINER



KITCHEN / DINER / WASHCAR



WASHCAR



SKID SLEEPER





RES

EQUIPMENT SALES

339 KENNEDY ROAD, DRYDEN ONTARIO P8N 2Y8



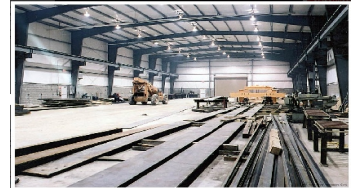
Steel & Metal Pre-engineered Building Packages

We specialize in, Commercial, Industrial, and residential buildings.



Save Time and Money with Steel Building Systems

Building construction cost up to 60% less

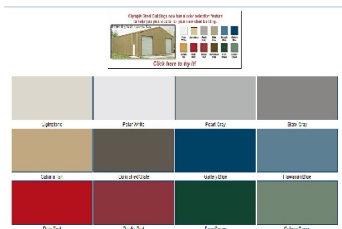


Building construction stronger and more durable

Buildings come standard with galvanized Girts and Purlins, and C-sections



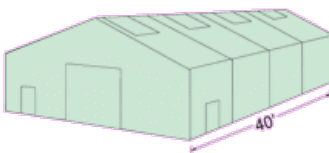
PBR roof panels are 26 gauge and leak proof, and with 25 year rust Warranty



Stainless Steel Self-drilling Fasteners, with Siliconized Polyester coating. Choose from twelve colours, 40 year Warranty for panel and trim



Expandable to any Length



Riding stables, Garage, Cabins, Barns, Auto shops, mini-storage, and any other types of building needs.

Call RES Equipment at 1-807-221-4670
For more information

Simplicity of Erection

- To install:**
1. Unfold roof
 2. Continue raising roof
 3. Add further sections
 4. Add end walls



For example, a 40' x 60' Fold-A-Way building can be erected in 48 hours.

Basic Model Configurations



RES

Equipment Sales

Box 220, 339 Kennedy Road
Dryden, Ontario, Canada P8N 2Y8

Phone number: 1 807-221-4670 ~ FAX number: 1 807-221-4672
Email: pneel_res@shaw.ca Website: <http://www.resequip.com>

RES - CAN SUPPLY YOUR SITE WITH

Fold - A - Way Buildings



The Fold-A-Way metal building is relocatable, easy to setup, and can be reconfigured in an almost endless variety of designs. Fold-A-Way buildings have been used for such diverse projects as maintenance shops, warehouses, first aid shelters and fire halls, equipment storage and other applications.

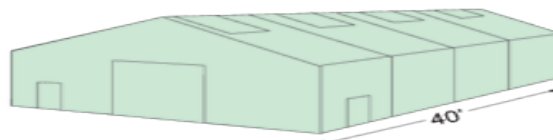
Options include:

- Lighting packages
- Heat packages
- Coloured cladding
- Interior lining
- Insulation
- Windows & doors
- Lifting slings

Basic Model Configurations



Expandable to any Length





Fabric Structures

339 Kennedy Road, Dryden, Ontario P8N2Y8

Phone number: 1 807-221-4670 ~ Fax number: 1 (807) 221-4672

Email: pneel_res@shaw.ca

Website: <http://www.resequip.com>

COLD STORAGE



RES IS A DEALER OF FABRIC STRUCTURES, PROVIDING STEEL- FRAME, FABRIC COVERED BUILDINGS TO NORTHWESTERN ONTARIO AND MANITOBA.

WE PROVIDE A LINE OF COST EFFECTIVE AND HIGHLY DURABLE STORAGE / SHELTER STRUCTURES THAT ARE ENVIROMENTALLY-FRIENDLY, FIRE RETARDANT, AND PORTABLE.

CROP STORAGE



MANUFACTURING



WE OFFER FABRIC STRUCTURES FROM 18' TO 100' WIDE AND ANY LENGTH YOU REQUIRE. A CLEAR SPAN STRUCTURE IS DESIGNED FOR MAXIMUM USE OF THE ENCLOSED AREA.

OUR STRUCTURES' HIGH PERFORMACE FABRIC, USES UNIQUE TECHNOLOGY, GIVING IT TREMENDOUS STRENGTH AND DURABILITY. THE HEAVY-DUTY, POLYETHYLENE FABRIC IS CREATED USING A LAYER OF WOVEN TAPES (SCRIM) AND COATED WITH A THICK PROTECTIVE LAYER.

FARM STORAGE



WORK SHOPS



LIGHT FABRIC COVERS PROVIDE BRIGHT INTERIORS AND OUR UNIQUE FABRIC IS PLIABLE, RESISTANT TO ULTRAVIOLET DAMAGE, AND HAS TREMENDOUS RIP, TEAR & PUNCTURE RESISTANCE.

THERE ARE 7 COLORS TO CHOOSE FROM AND ALL FEATURE A BRIGHT WHITE UNDERSIDE THAT ENHANCES THE INTERIOR BRIGHTNESS.

SALT & SAND



INDUSTRIAL



NO TOXIC CHEMICALS ARE USED IN THE PRODUCTION OF OUR STRUCTURES HIGH PERFORMANCE FABRIC.

VEHICLE STORAGE



Call RES Equipment Sales at
1-807-221-4670
For more information



RES

Equipment Sales

Box 220, 339 Kennedy Road
Dryden, Ontario, Canada P8N 2Y8



Phone number: 1 807-221-4670

Email: pneel_res@shaw.ca

~ FAX number: 1 807-221-4672

Website: <http://www.resequip.com>

RES Equipment Sales Facilities



Main Office & Warehouse



Machining, Welding, Sandblasting, Painting



Main Shop & Test Facility



Parts Department & Receiving



RES

Equipment Sales

Box 220, 339 Kennedy Road
Dryden, Ontario, Canada P8N 2Y8



Phone number: 1 807-221-4670

Email: pneel_res@shaw.ca

~ FAX number: 1 807-221-4672

Website: <http://www.resequip.com>

Parts Department & Receiving



We offer quality replacement parts and products from our well-stocked warehouses.

We serve the needs of Forestry, Mining, Drilling, General Construction, Contracting, General Home Owners, as well as, the Agriculture Industry.

If we don't carry the product or part you are looking for, RES can find it. Contact Russell or Steve at:

1-807-221-4670

RES

Contracting & Rentals Inc.

339 Kennedy Road, Dryden, Ontario P8N 2Y8

Office: 1 (807) 221-9805 Fax: 1 (807) 221- 4625



EXCAVATION AND LANDSCAPE CONTRACTOR



- . Skidsteers
- . Landscaping
- . Post hole drilling
- . Demolition
- . Shoreline Restoration
- . Weeping Tile
- . Excavators
- . Trenching
- . Hydro-seeding
- . Snow Removal
- . Brush Hog
- . Site Preparation
- . Gravel Truck
- . Septic Fields



- . Skidsteer/ Excavator
And Dozer Service
- . Driveway Excavating
And Back-filling



- . Fully Insured
- . Experienced
- . Free Estimates



807-221-9805

Dryden, Ontario



RES

Contracting & Rentals Inc.

339 Kennedy Road, Dryden, Ontario P8N 2Y8
Office: 1 (807) 221-9805 Fax: 1 (807) 221- 4625



WE RENT CONTRACTOR TOOLS AND EQUIPMENT



- . Roofing Nailer Package
- . Dewalt Hammer Drill SDA Max
- . Electric Concrete Drill 3/8" - 1 3/4 SDS
- . Concrete Breaker – 60lb
- . 36" Power Trowel – c/w Floats
- . Concrete Vibrator
- . Cut Off saws
- . Plate Packer 24"x24" - Gas Engine
- . Plate Packer 450lb – Gas engine
- . Trash Pump – 2" inlet/outlet – gas
- . Submersible Pump
- . Drywall Lift 3/Extension
- . Sewer Snake – electric- 1 1/2" head
- . Lawn De - thatcher
- . Roto - Tiller
- . Post Hole Augers
- . Pressure Washers
- . Lawn Rollers
- . Backpack Blower
- . Stump Grinder
- . High Grass Brush Mower - w/b
- . Log Splitter
- . Brush Chipper
- . Concrete Mixer – electric
- . Lawn Aerator
- . Bull Float – c/w 2 handles
- . wet/ Dry Vacuum – 24 gallon



ATTACHMENTS

WE HAVE A FULL SUPPLY
OF ATTACHMENTS FOR YOUR
PROJECTS

